



IMMACULATE CONCEPTION SCHOOL

Serving Communities in Downtown Los Angeles for 100 Years.



www.ics-la.org facebook.com/ICSchoolLA twitter.com/ICSchoolLA youtube.com/ICSchoolLA

2021-2022 Tuition: Transitional Kindergarten (TK) - 8th Grade Panthers

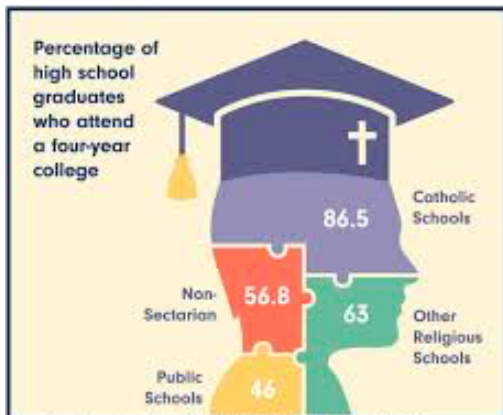


Congratulations on choosing an Immaculate Conception education for your child!!!

This is a **valuable decision to invest** in educating your child at Immaculate Conception that is an **advantage for your child and your family for life.**

We are a non-profit and your child deserves the best!!! We are a ministry of love, but we must collect tuition to run our school.

FINANCIAL AID is available. You must submit an application and proof of income in order to receive consideration. You will be asked to do extra fundraising or service hours.



<p><u>Transitional Kindergarten</u> (age 4 by Sept. 1) <u>ACTIVE CATHOLIC Discount:</u> July-May monthly payments: \$395 per mo.</p>	<p><u>Transitional Kindergarten</u> (age 4 by Sept. 1) <u>OUT OF PARISH:</u> July-May monthly payments: \$445 per mo.</p>
<p><u>K-8th Grade:</u> <u>ACTIVE CATHOLIC Discount:</u> July-May* monthly payments: \$336 per mo. *8th graders are July-April \$369 monthly <u>Discount for 2 siblings:</u> Two Children July-May* monthly payments: \$554 monthly <u>Discount for 3 siblings:</u> Three Children July-May* monthly payments: \$772 monthly</p>	<p><u>K-8th Grade:</u> <u>OUT-OF-PARISH:</u> July-May* monthly payments: \$386 per mo. *8th graders are July-April \$424 <u>Discount for 2 siblings:</u> Two Children July-May* monthly payments: \$637 monthly <u>Discount for 3 siblings:</u> Three Children July-May* monthly payments: \$888 monthly</p>



The ACTIVE CATHOLIC DISCOUNT is based on attending/contributing with school envelopes to Immaculate Conception Church of **a minimum of \$5 on 75% of Sundays** - which will be reviewed at the end of each trimester. After reviewing church envelopes, tuition may be adjusted.

-OR-

a letter from your own Catholic Church verifying your attendance/contributions.

Tuition is based on 11* monthly payments, **beginning July, 2021**, payable through FACTS Tuition only. **NO cash can be accepted in the office.**

8th grade students (only child in the school) = 10 months (July - April)

NON-Refundable/Educational Expenses: REGISTRATION & TECHNOLOGY FEE

When a parent registers a child, accounts are created and resources are given. We ever want every student to graduate from 8th grade, but if it is necessary for a child to withdraw, these fees are already allotted and cannot be returned.



We appreciate your understanding.



IMMACULATE CONCEPTION SCHOOL

Serving Communities in Downtown Los Angeles for **100** Years.



www.ics-la.org facebook.com/ICSchoolLA twitter.com/ICSchoolLA youtube.com/ICSchoolLA

	Priority Registration: Paid by March 12, 2021	Registration	Priority Tech Fee: Paid by April 12, 2021	Tech Fee
TK-8	\$175	\$225	\$125	\$175



REGISTRATION & TECH FEE: reserves your child's spot for a discounted price (if you have more than one child, the priority registration will be applied to each child. Please inform the office if you would like the children's registration to be divided into multiple months).

Possible Additional Expenses:

Daycare 2-8: dismissal - 6pm	\$125 monthly 1st child, + \$40 for each additional child
Daycare TK-1: dismissal - 6pm	\$145 monthly 1st child, + \$40 for each additional child in 2-8 (each child TK-1 is \$55 extra)
After-school Enrichment (optional) @ additional price	Varies (music, theater, cooking, science, robotics, etc.)
ICS Sports	varies by sport
Meal program (breakfast and lunch)	varies, but many qualify for free or reduced cost based on parents' income

*Possible **PARISH FUNDRAISER:***

- Parish Raffle -- **TBD** (there is a buyout option)
- **Save the Date: TBD**, 3 hour shift at the Parish Fiesta or \$60 buyout

WE BUILD COMMUNITY BY DOING FAMILY SERVICE HOURS:

Each family must work 12 SERVICE HOURS by December 20 & 13 hours by May 20 = 25 total → Fall service hours may include a +3 hour **SHIFT AT THE PARISH FIESTA**.
Incomplete service hours will be charged at current minimum wage.



THERE ARE 3 MANDATORY SCHOOL FUNDRAISING ACTIVITIES:

ICS gives EVERYONE a discount; fundraisers help our non-profit educate your child

- **Fall Sale** (we will survey families for preference) - October 2021 (buyout option depends on what sale is chosen by parents in the survey)
- **Winter Event** - February 2022 (buyout option depends on what it is)
- **Spring _____-a-thon** May 2022 (buyout option depends on what it is)